

Notice to Airmen

Issued: 11/04/2011 : 13:55:26 NOTAM NSW SAC 2011/01

On Sunday 13NOV11 the NSW Sport Aircraft Club, Inc. will be conducting its annual Open Day at Wedderburn airfield YWBN. Club aircraft will be operating on the day and fly-in aircraft are also expected. Significant traffic peak expected from 8.30am-10.00am local time, depending on weather.

Elevation: 850m **Runways:** 17/35 **930 m** left hand circuits
Taxiways: parallel taxiway in operation. Backtracking not permitted unless operationally necessary.
CTAF 122.55 with temporary Unicom operating on the day
Call sign: **WEDDERBURN UNICOM** or **WEDDERBURN TRAFFIC**
GROUND 120.85 temporary ground frequency for taxi guidance and parking arrival/departure assistance operating on the day
Call sign: **WEDDERBURN GROUND**
Restrictions: Note proximity of **R555** to the north east
Note **YWBN Fly Neighbourly** requirements attached
Documents: Check **ERSA** and current **SYDNEY VTC**

ARRIVAL Procedure:

Usual CTAF arrival procedures apply. Monitor **122.55** MHz and call inbound. Local weather and operational instructions may be provided by Unicom on request. Unnecessary radio traffic discouraged. After landing, clear the runway at the first available taxiway exit, once clear of runway change to ground frequency – **120.85** MHz and call Wedderburn Ground, proceed to the aircraft parking area north of the clubhouse, look for marshall guidance. Be aware of possible pedestrian traffic in the parking area.

DEPARTURE Procedure:

Clear area around your aircraft, following engine start advise YWBN Ground and look for ground marshall assistance. Prior to entering runway change to **CTAF 122.55** and advise your intentions of local flight or departure direction.

Airfield Closure:

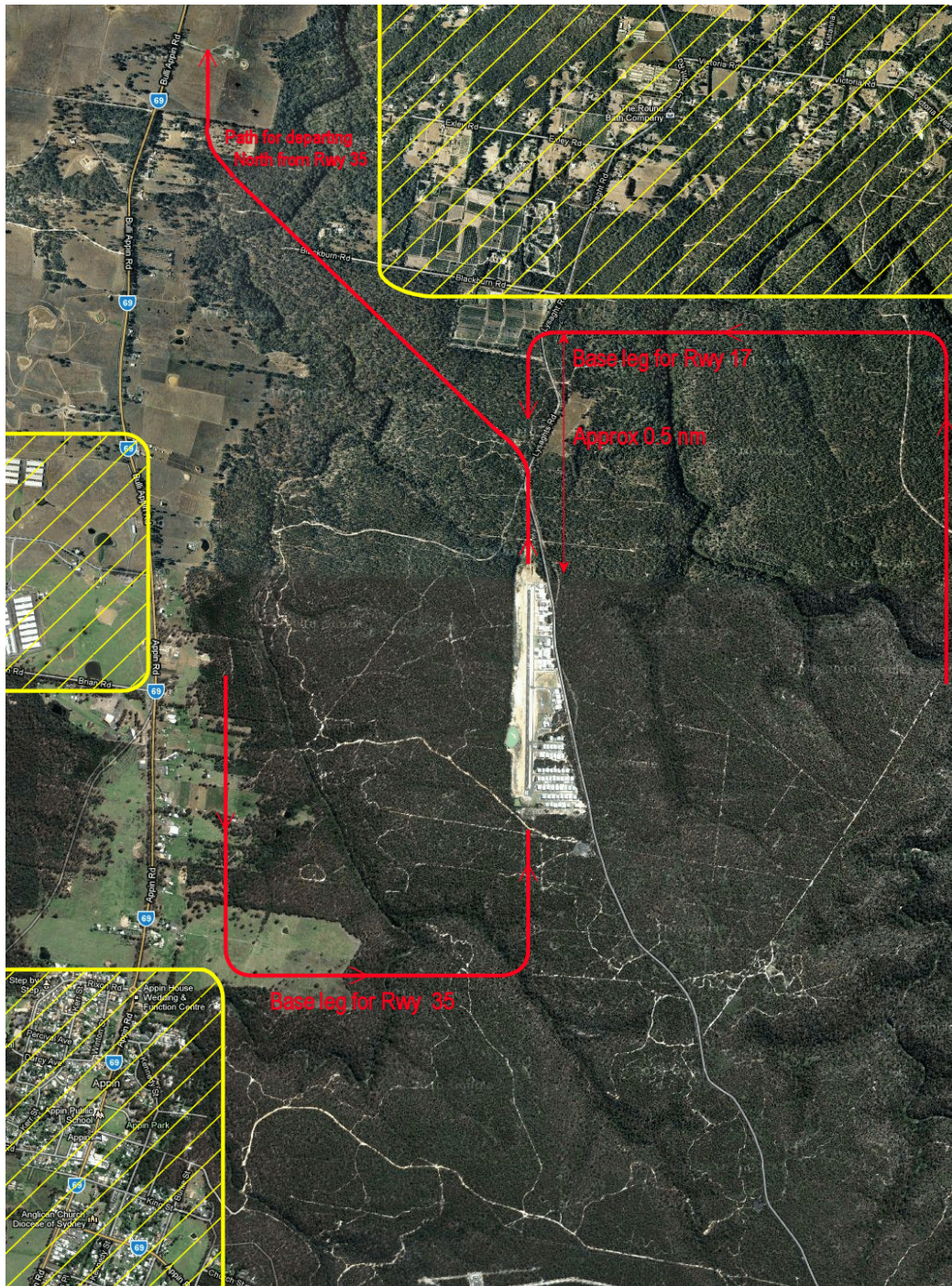
Airfield closure is likely during the day for aircraft model displays or specialist vehicle display. These closures are planned to last no longer than 15 minutes. Closure times will be advised on both the Unicom and Ground Frequencies with 15 minutes notice where possible.

Further details available on NSW SAC website
www.wedderburnairstrip.com.au .

Fly Neighbourly at Wedderburn YWBN

We are aware of the potential noise impact of our operations on our neighbours, and have developed a policy to minimize any inconvenience to our neighbours in built up areas close by.

YELLOW AREAS: sensitive built up areas – remain clear if possible
RED TRACK: preferred approach/departure and circuit track



Thank you for your co-operation.